



# ***DATUM C Technology***

## ***Gas - Electric Alliance, February 2009***

José L. Gilarranz R. - Sr. Product Technology Engineer

Harry Miller - Product Manager, Marketing

Bill Parry - Director of Business Development

**DRESSER-RAND**<sup>®</sup>

# *Safe Harbor Disclosure*



Some of the information contained in this document contains "forward-looking statements". In many cases, you can identify forward-looking statements by terminology such as "may," "will," "should," "expects," "plans," "anticipates," "believes," "estimates," "predicts," "potential," or "continue," or the negative of such terms and other comparable terminology. These forward-looking statements are only predictions and as such inherently included risks and uncertainties. Actual events or results may differ materially as a result of risks facing Dresser-Rand Company (D-R) or actual results differing from the assumptions underlying such statements. These forward-looking statements are made only as of the date of this presentation, and D-R undertakes no obligation to update or revise the forward-looking statements, whether as a result of new information, future events or otherwise. All forward-looking statements are expressly qualified in their entirety by the "Risk Factors" and other cautionary statements included in D-R's annual, quarterly and special reports, proxy statements and other public filings with the Securities and Exchange Commission and other factors not known to D-R. Your decision to remain and receive the information about to be presented to you shall constitute your unconditional acceptance to the foregoing.

# *Confidential & Proprietary*



Any person allowing themselves to directly or indirectly receive the information contained in this presentation (the "Receiver") agrees that this presentation and all information contained herein and/or in any way distributed to the Receiver with respect to the same (verbal or otherwise) is the confidential and proprietary property of Dresser-Rand Company and is being provided to and received by the Receiver in confidence. Receiver agrees not to divulge the contents hereof to any third party without the prior written approval of Dresser-Rand's duly authorized representative. Receiver shall advise any permitted recipient of the confidential information of the nature of the same and obtain their agreement to be bound to these terms before such confidential information is disclosed to them. Receiver on behalf of its principal, representatives, employees and themselves individually to hereby unconditionally agree to the terms hereof and agree to defend, indemnify, and hold Dresser-Rand harmless from and against any and all damages that result from Receiver's failure to strictly comply with these terms. Receiver further agrees that failure to comply with these terms will cause Dresser-Rand to suffer irreparable harm. Your decision to remain and receive the information about to be presented to you shall constitute your unconditional acceptance to the foregoing.

# Compact Installation

## Conventional train

184,200 lb (wet) / 509 sqft

Lube Oil Console

Gear Box

Air Cooled  
Electric Motor

Baseplate

Gas Seal Panel

Compressor

## Comparison

C.T. > 2x Weight

C.T. > 5x Floor space

DATUM Model "C")

78,050 lb / 100 sqft

Gas conditioning skid not shown

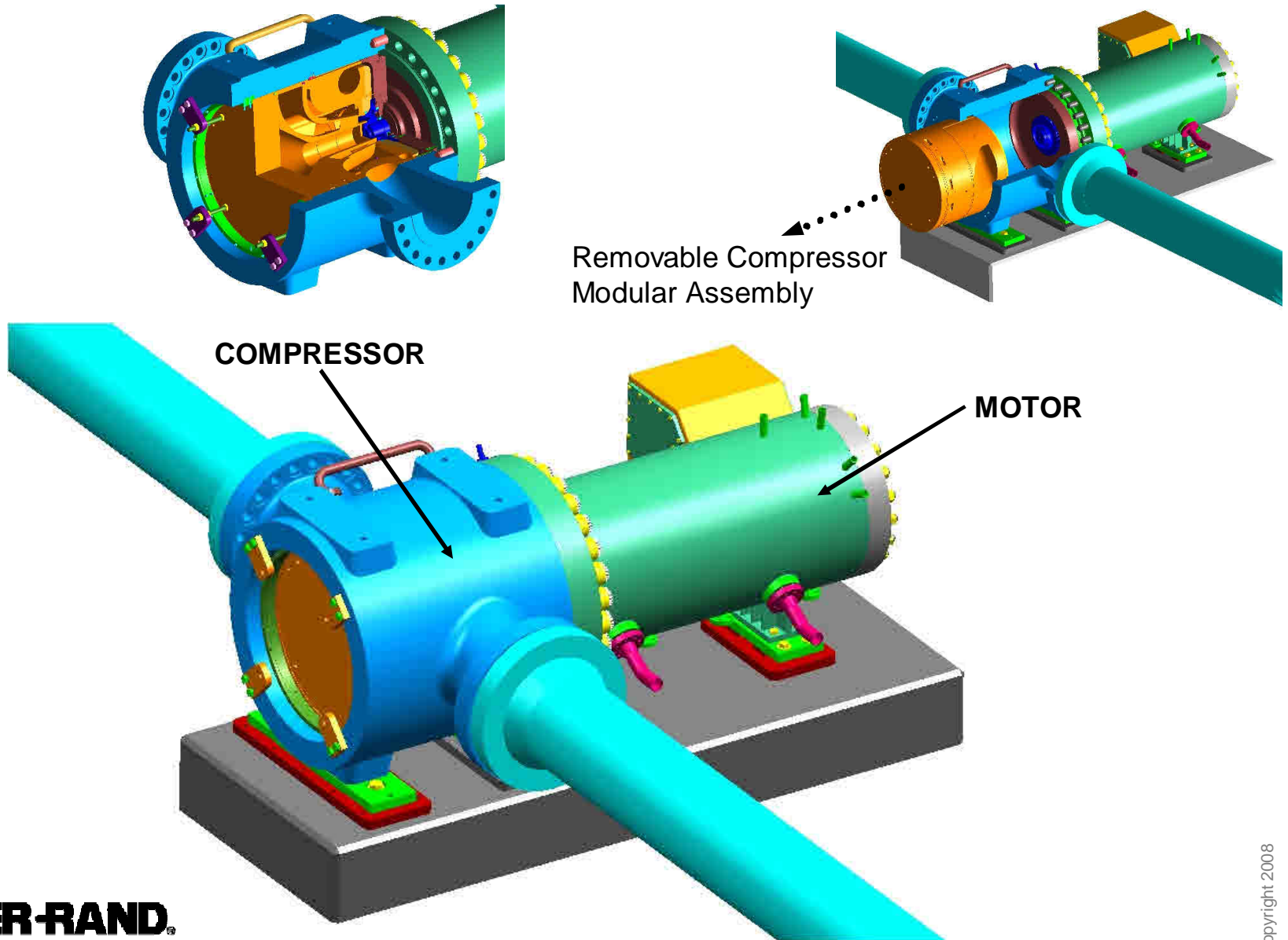
**DRESSER-RAND**

Dresser-Rand Co. Confidential and Proprietary

## *DATUM C Design Features*

- ◆ Integrated, electric motor driven compressor designed for natural gas pipeline and process gas applications.
- ◆ Main Technical Features
  - D-R High Efficiency DATUM Flowpath
  - Single-Stage or Multi-Stage Compressor Configuration
  - Integrated High Speed, Electric Motor Driver
    - Variable speed machine
  - Magnetic Bearings for Compressor and Motor
  - Hermetically sealed casing
  - Motor / AMBs cooled by Process Gas or H<sub>2</sub>

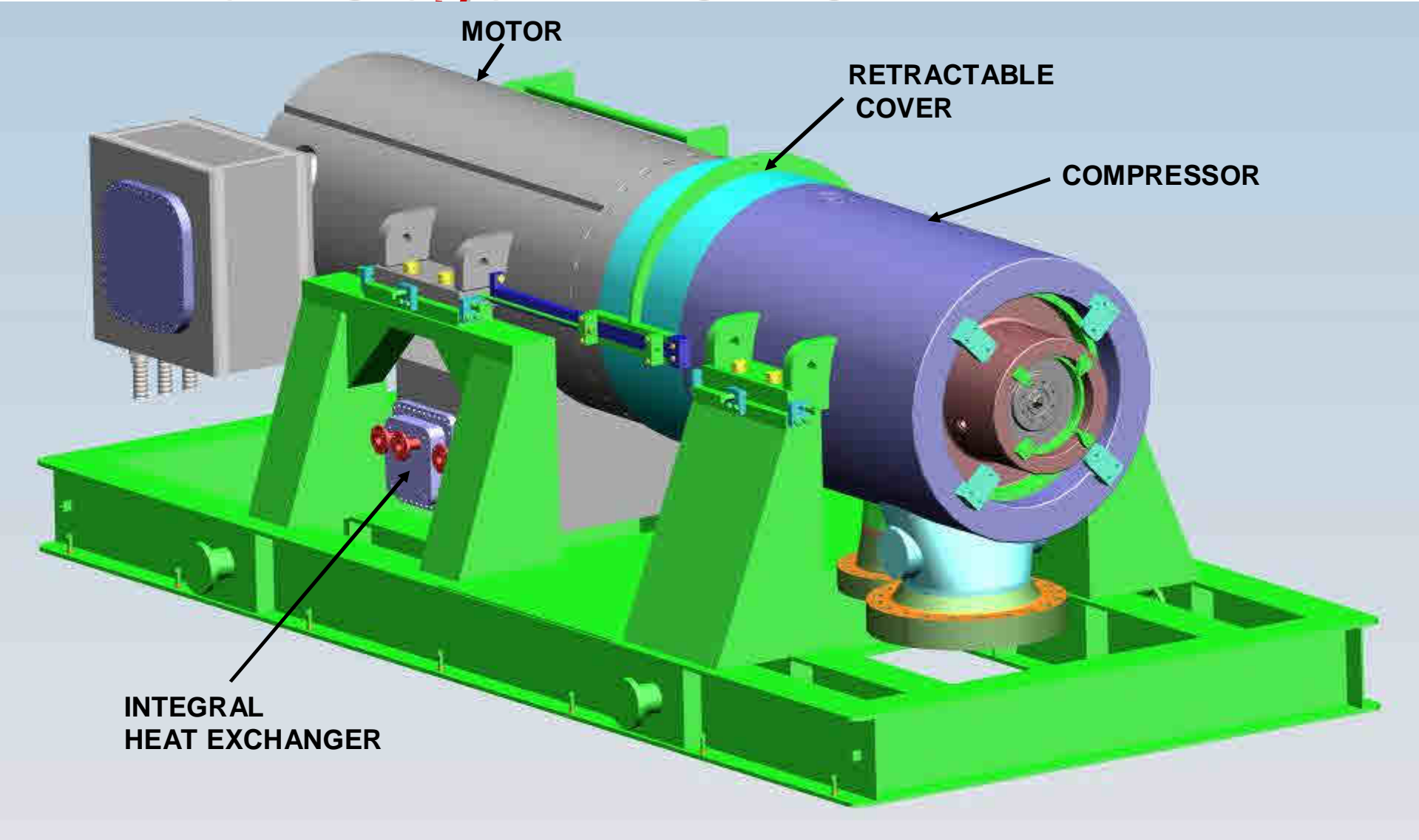
# Single-Stage DATUM C



**DRESSER-RAND**

Dresser-Rand Co. Confidential and Proprietary

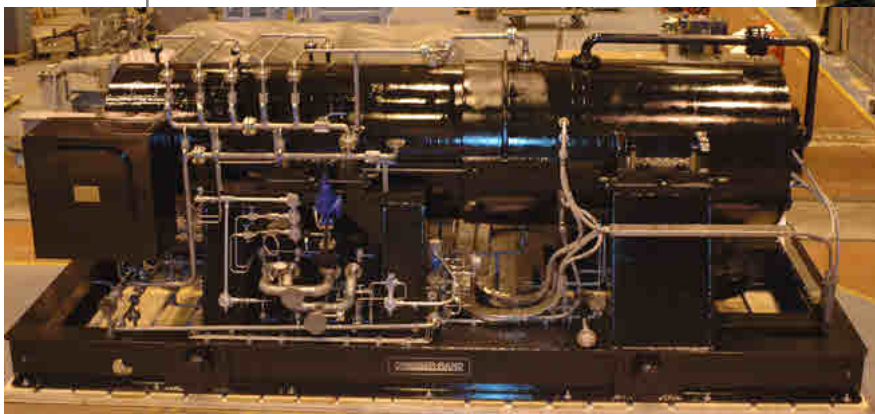
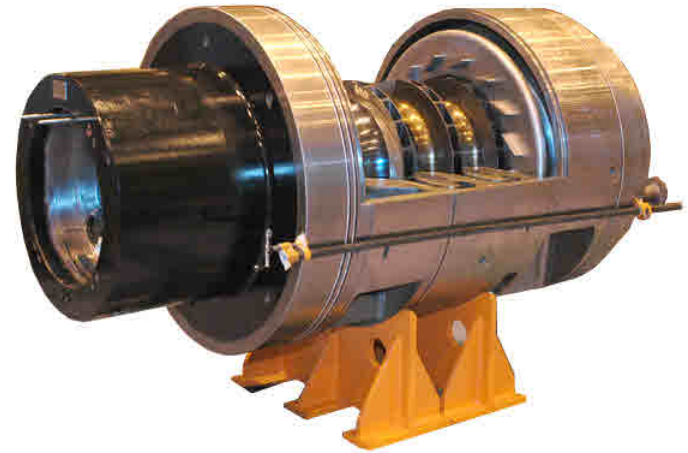
# Multi-Stage DATUM C



**DRESSER-RAND**

Dresser-Rand Co. Confidential and Proprietary

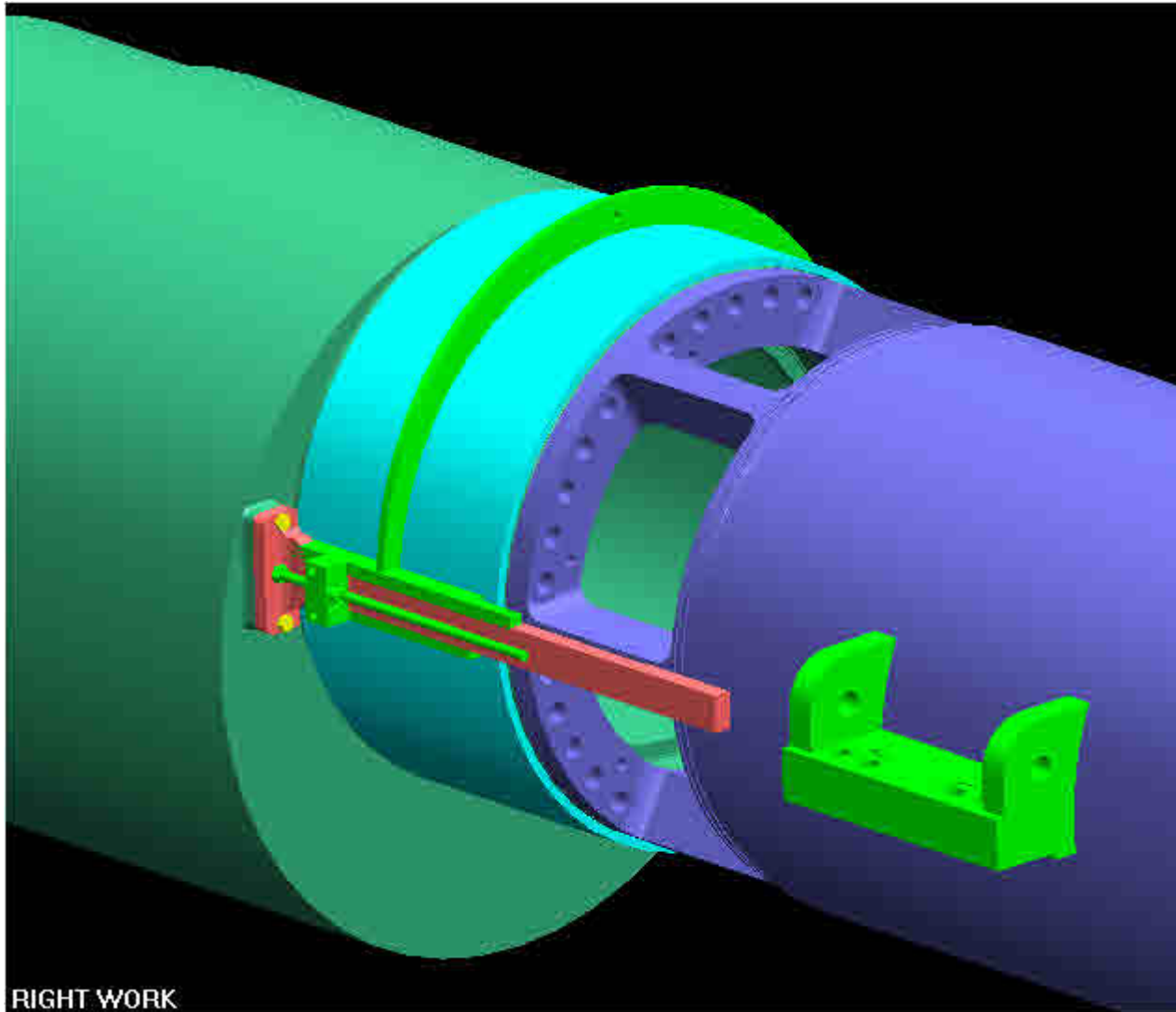
# Multi-Stage DATUM C



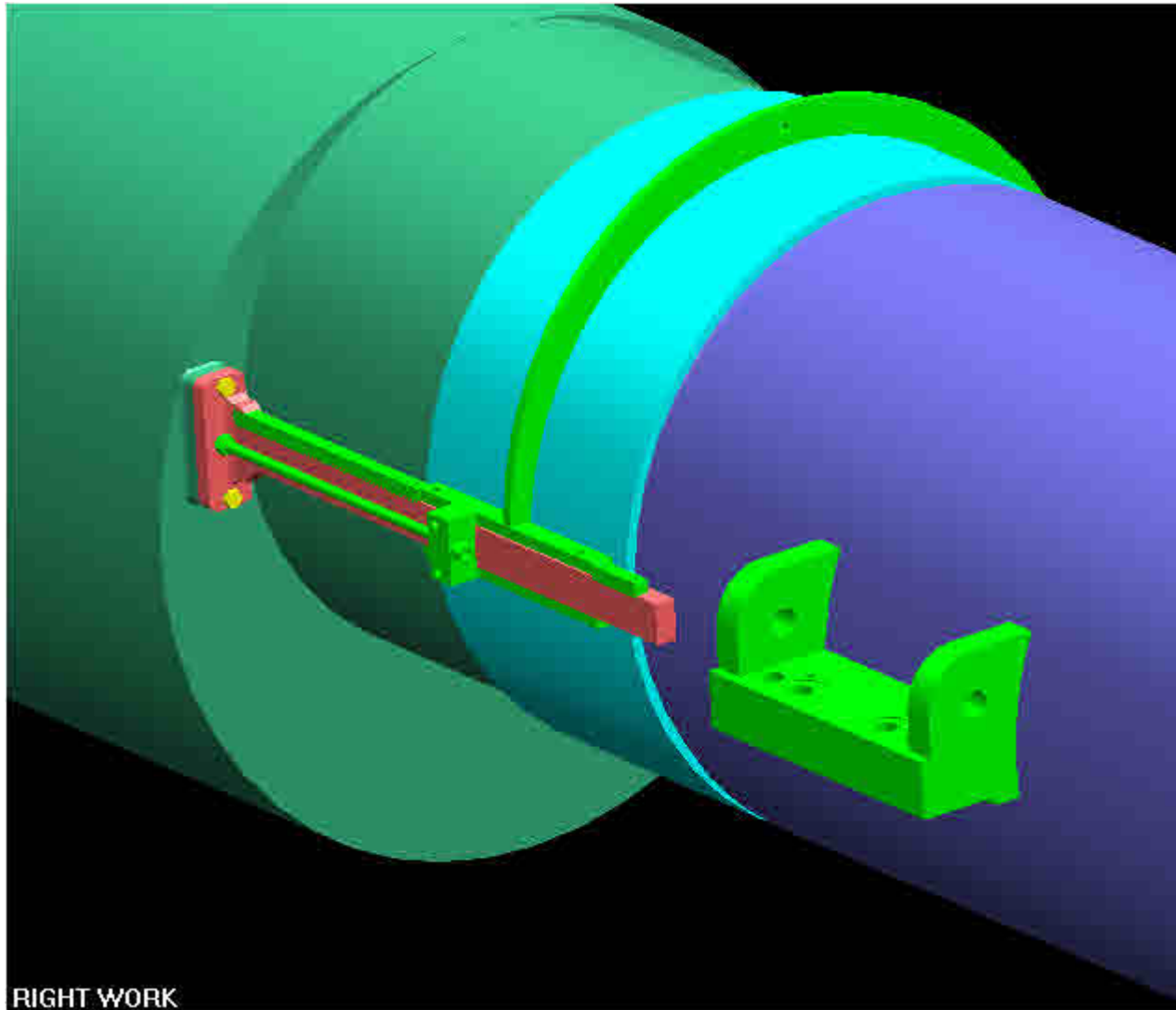
**DRESSER-RAND**

Dresser-Rand Co. Confidential and Proprietary

# *Retractable cover pulled back*



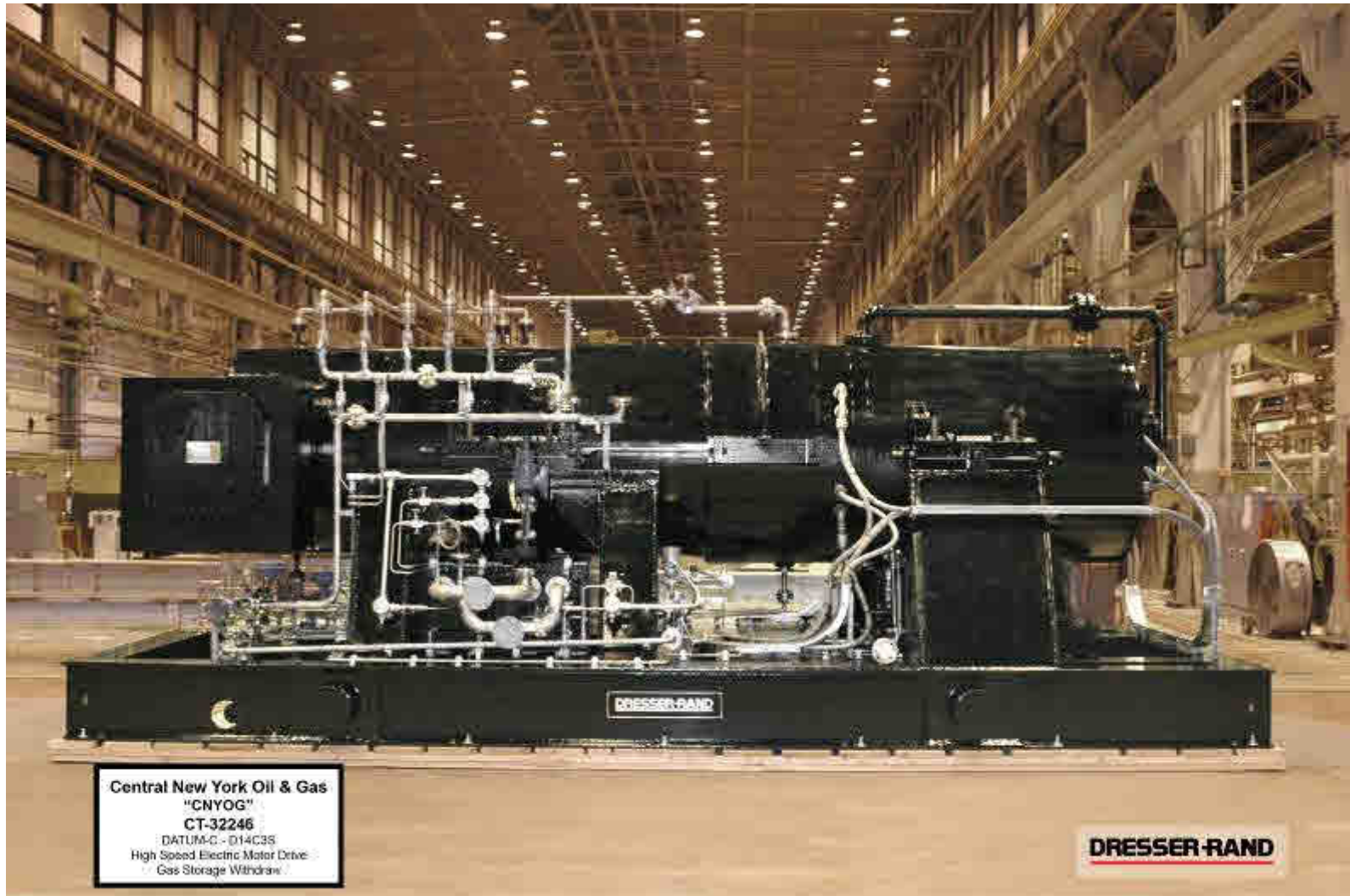
# *Retractable cover in running position*



**DRESSER-RAND**

Dresser-Rand Co. Confidential and Proprietary

# *DATUM C Unit - Jan. 14, 2008*



**DRESSER-RAND**

Dresser-Rand Co. Confidential and Proprietary

# Acceptance Test Results

Casing	1	Train	
Frame	D14R3S		
Case Rating (PSI G)	1200		
Brake Power (HP)	11,175	11,175	vs. 11405 BHP +/-4% guarantee
Rotating Speed (RPM)	6,920		vsw. 6810 rpm quoted
Section Number	1		



*Thank you for your attention....*

**DRESSER-RAND®**

[www.dresser-rand.com](http://www.dresser-rand.com)

[info@dresser-rand.com](mailto:info@dresser-rand.com)