



DRESSER-RAND

Enginuity, Gas Engine Technology Center

Reciprocating Engine Technologies

Safe Harbor Disclosure



Some of the information contained in this document contains "forward-looking statements". In many cases, you can identify forward-looking statements by terminology such as "may," "will," "should," "expects," "plans," "anticipates," "believes," "estimates," "predicts," "potential," or "continue," or the negative of such terms and other comparable terminology. These forward-looking statements are only predictions and as such inherently included risks and uncertainties. Actual events or results may differ materially as a result of risks facing Dresser-Rand Company (D-R) or actual results differing from the assumptions underlying such statements. These forward-looking statements are made only as of the date of this presentation, and D-R undertakes no obligation to update or revise the forward-looking statements, whether as a result of new information, future events or otherwise. All forward-looking statements are expressly qualified in their entirety by the "Risk Factors" and other cautionary statements included in D-R's annual, quarterly and special reports, proxy statements and other public filings with the Securities and Exchange Commission and other factors not known to D-R. Your decision to remain and receive the information about to be presented to you shall constitute your unconditional acceptance to the foregoing.

Confidential & Proprietary



Any person allowing themselves to directly or indirectly receive the information contained in this presentation (the "Receiver") agrees that this presentation and all information contained herein and/or in any way distributed to the Receiver with respect to the same (verbal or otherwise) is the confidential and proprietary property of Dresser-Rand Company and is being provided to and received by the Receiver in confidence. Receiver agrees not to divulge the contents hereof to any third party without the prior written approval of Dresser-Rand's duly authorized representative. Receiver shall advise any permitted recipient of the confidential information of the nature of the same and obtain their agreement to be bound to these terms before such confidential information is disclosed to them. Receiver on behalf of its principal, representatives, employees and themselves individually to hereby unconditionally agree to the terms hereof and agree to defend, indemnify, and hold Dresser-Rand harmless from and against any and all damages that result from Receiver's failure to strictly comply with these terms. Receiver further agrees that failure to comply with these terms will cause Dresser-Rand to suffer irreparable harm. Your decision to remain and receive the information about to be presented to you shall constitute your unconditional acceptance to the foregoing.

Safety Moment



- ◆ A Dresser-Rand Safety Moment...

Safety - It's about people going home in good health to their families every night!

Technology

Technology

Breadth:

Engenuity applies the most effective technology for each application. This requires a combination of identification and evaluation of existing technology, qualification of technology partners for development, and in house development efforts.

NESHAP Compliance :

Requires more than "Slap-On" equipment. It requires a strategic solution to meet compliance objectives

Emissions Reduction

*Enhanced Mixing
Re-Aero
Ignition*

*Catalyst
Low Emissions
Combustion*

Mechanical Retrofit

*Turbocharger
Intercooler
Exhaust System*

Camshaft

Automation / Monitoring

*Unit Control
Air / Fuel
Ratio
PEMS*

*Pressure Monitoring
Auto-Balancing*

Technology

RECIPROCATING ENGINE TECHNOLOGY MATRIX											
ENGINE	Emissions Reduction - Combustion Based					IMPACT - Pressure Monitoring		All Engine Types			
	Pre-Chambers (SIP, Mini-SIP)	Turbocharger	Mixing Kits	Port 4 (Port Injection)	HPFi	iBALANCE (power)	iFLOW (Compressor)	iFLEX Unit Controls	RELi - Air/Fuel Ratio Control	Catalyst	CMP
Slow Speed / Integral - Lean Burn	X	X	X	X	X	X	X	X	X	X	X
Slow Speed / Integral - Rich Burn	X	X		X		X	X	X	X	X	X
High Speed / Separable				X			X	X	X	X	X
SIP - Screw-In Prechamber											
HPFi - High Pressure Fuel Injection											
iBALANCE - Power cylinder pressure monitoring. Can be tied to HPFi for automatic power cylinder pressure based balancing											
iFLOW - Compressor cylinder (head and crank end) pressure monitoring system											
RELi - Air/fuel ratio control system											
Catalyst - Can be applied to rich or lean burn based engines											
GHG - Greenhouse Gas											
CMP - Catalyst Management Program											
Slow Speed / Integral - Lean Burn (Operates at greater than 2% O2 in Exhaust)											
High Speed / Separable (Could be lean burn or rich burn engines)											

Technology

RECIPROCATING ENGINE TECHNOLOGY MATRIX												
						iMPACT - Pressure Monitoring						
ENGINE	Pre-Chambers (SIP, Mini-SIP)	Turbocharger	Mixing Kits	Port 4 (Port Injection)	HPFi	iBALANCE (power)	iFLOW (Compressor)	iFLEX Unit Controls	RELi - Air/Fuel Ratio Control	Catalyst	CMP	iFLEX - GHG
XVG, SVG, PVG, PSVG				X				X	X	X	X	X
KVG, KVGR	X	X		X				X	X	X	X	X
KVS, KVSR	X	X		X	X	X		X	X	X	X	X
KVH, KVT, KVR	X	X	X	X	X	X		X	X	X	X	X
RA, HRA, HRAT	X	X			X	X		X	X	X	X	X
BA, HBA, HBAT	X	X			X	X		X		X	X	X
HLA, TLA, TLAD	X	X			X	X		X		X	X	X
TCV	X	X			X	X		X		X	X	X
UTC	X	X			X	X		X		X	X	X
SUTC, ML, MLV	X	X			X	X		X		X	X	X
Cooper Bessemer (All)	X	X			X	X		X		X	X	X
Superior	X	X		X				X	X	X	X	X
Caterpillar		X						X	X	X	X	X
Waukesha		X		X				X	X	X	X	X
Wartsila		X						X		X	X	X

Combustion-Based Compliance Solutions

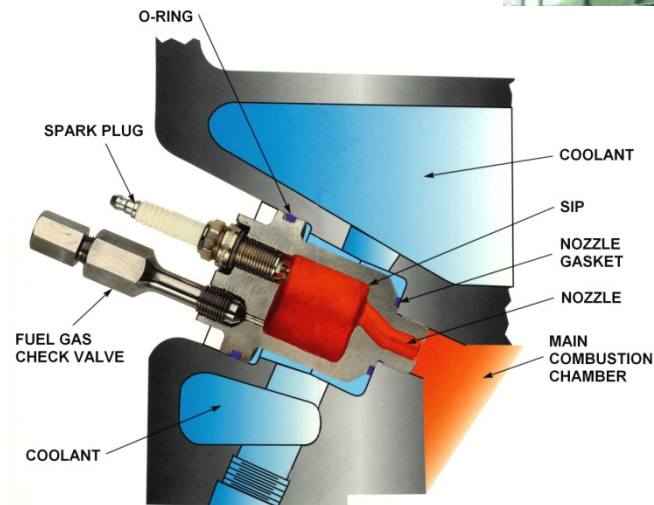
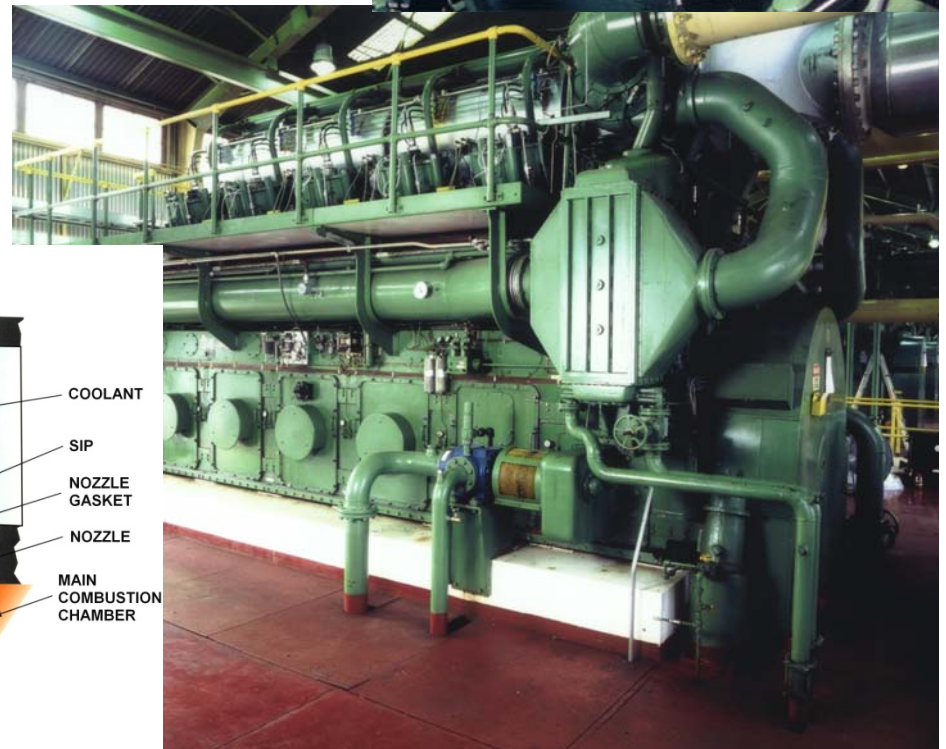
Design, Build, Commission



DRESSER-RAND

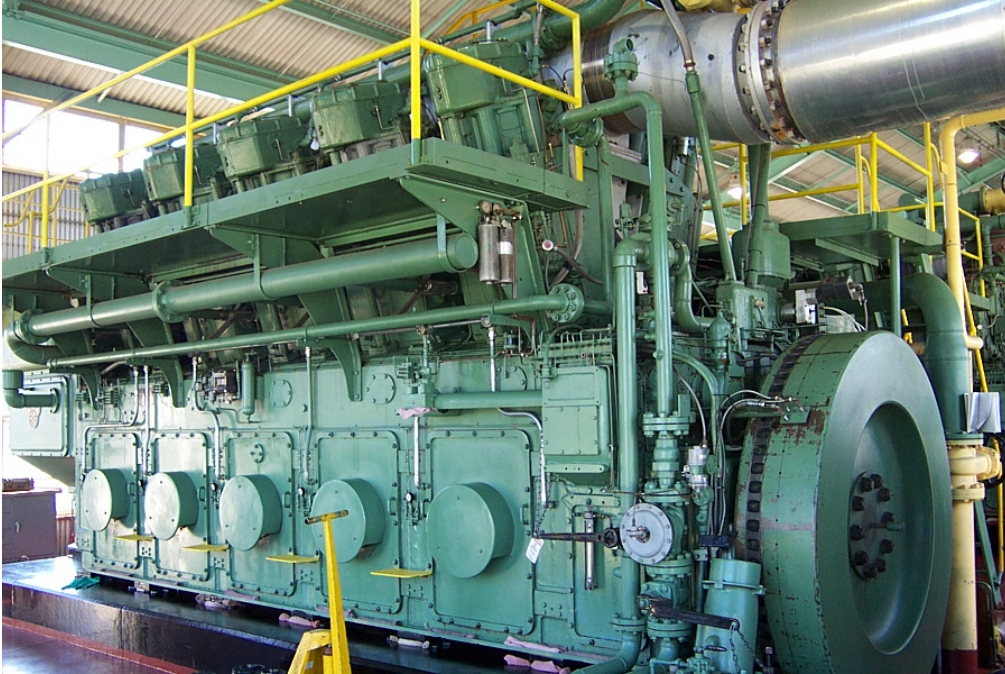
Combustion Solutions

- ◆ Pure Turbocharger Conversion
 - GMW, KVG, GMWA, GMWC
GMV,
- ◆ Enhanced Mixing
 - MPiV
 - HPFi
 - Single Point Injection
 - Multi Point Injection
- ◆ High Energy Ignition
 - SIP
 - Mini-SIP



DRESSER-RAND

Turnkey Emissions Solution



- ◆ Pipeline
- ◆ Gas Processing
- ◆ Gathering
- ◆ Refining
- ◆ Power



DRESSER-RAND

Engine Solutions

Solutions

Breadth:

With over **550 installations**.
Solutions range from our ground breaking **HPFi, SIPS, MPIV, Catalytic Converters, Air/Fuel ratio controls, PLC Based Unit Controls.**

D-R is the leading large-bore engine retrofitter today.

Over 30 Unique Engine Series Combustion Designs



Cooper Bessemer

W-330 GMWA
V-250 GMWC
GMV LSV
GMVH
GMW



Dresser Rand

Ingersoll - Clark - Worthington

KVG	TLA	TCVD	HRA
KVS	TLAD	UTC	HLA
KVR	TCV	ML	SVS
BA	TCVA	MLV	LVG
HBA	TCVC	KVT	SVG

Others

Nordberg - White Superior - Waukesha

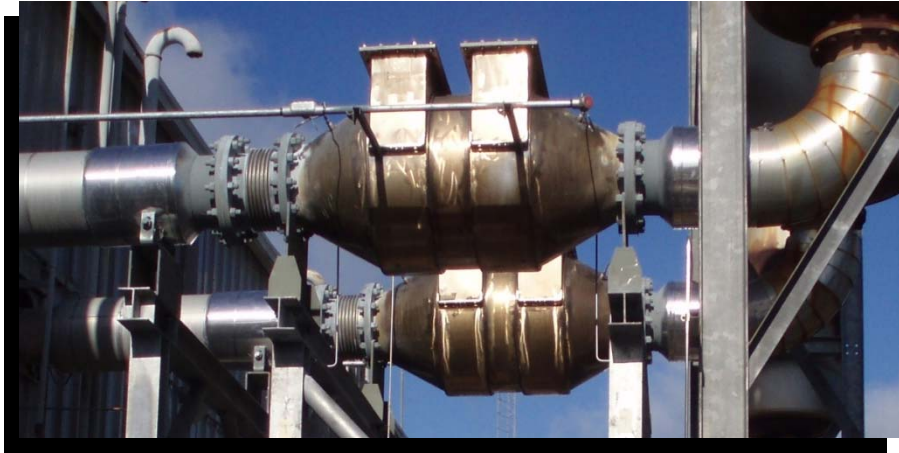
Caterpillar - Wartsila

FSE	16GTA	ATGL
3600	G-825	VHP
3500	2400	VGf
3300		18V-34SG

DRESSER-RAND

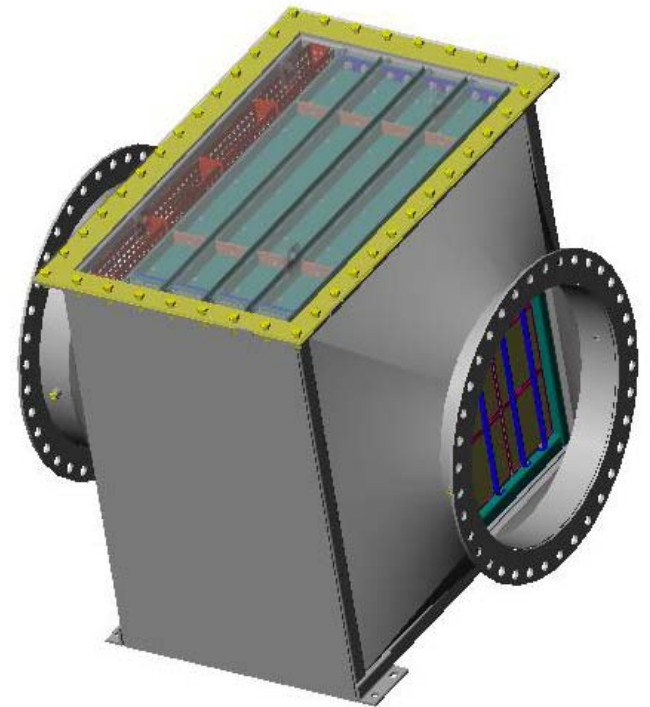
CLARK

DRESSER



D-R Enginuity Catalyst-Based Compliance Solutions

Design, Build, Commission



DRESSER-RAND

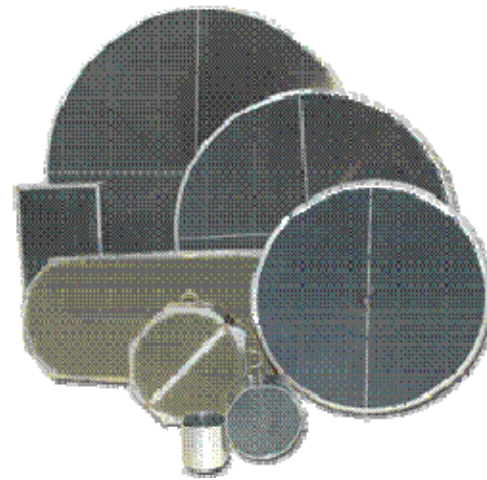


COMPLi – Catalytic Services



◆ New & Replacement Elements

- DCL
- Johnson Matthey
- Miratech
- Emit
- All Others



DRESSER-RAND

CMP (Catalyst Management Program)

A Comprehensive “R⁴ Buffet” of Services for Operators

- ◆ Restoration: Cleaning by industry leading methods
 - ◆ Repair: Mechanical repairs
 - ◆ Replacement: New Elements
 - ◆ Reclamation: Precious Metals
- Plus -
- ◆ All In House Quality Control & Recordkeeping
 - ◆ EPA, OSHA Compliant Wash Processes
 - ◆ Professional Service backed by a World Class Fortune 500 Company

Application Specific Products

***i*MPACT™**



*Continuous Pressure
Monitoring System*

***i*FLEX GHG**



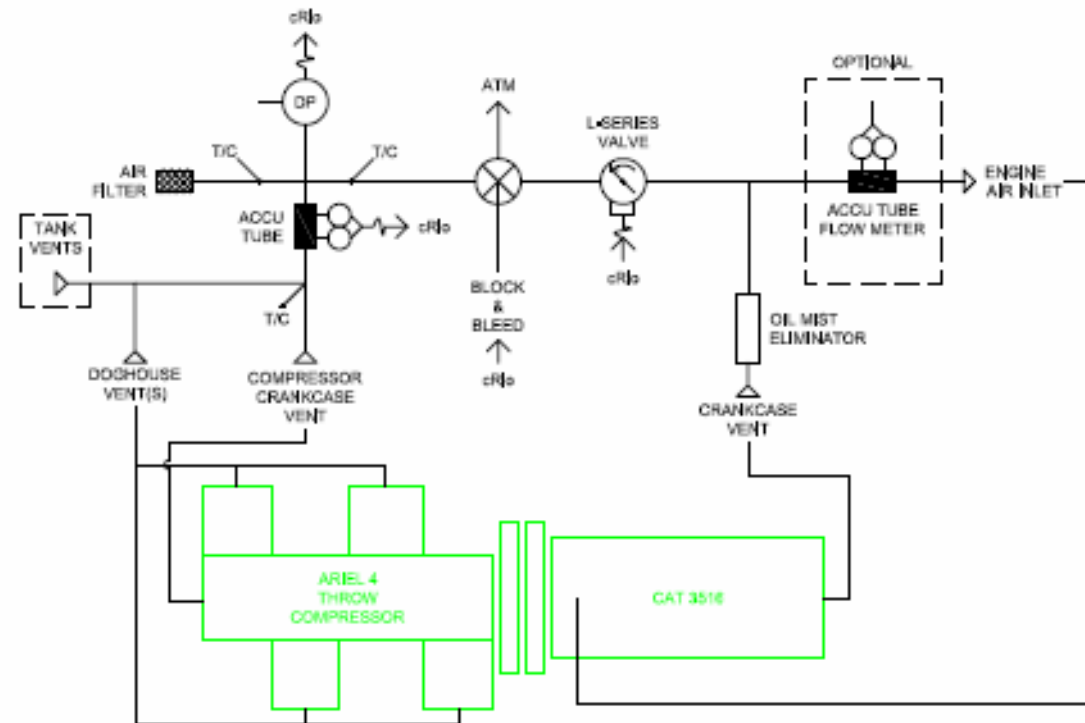
*Greenhouse Gas/VOC Remediation
System*

DRESSER-RAND

Application Specific Products

iFLEX GHG – Greenhouse Gas & VOC Minimization System

- ◆ Recovery and remediation
- ◆ Flow management
- ◆ Integral or Separable





DRESSER-RAND

www.dresser-rand.com
info@dresser-rand.com