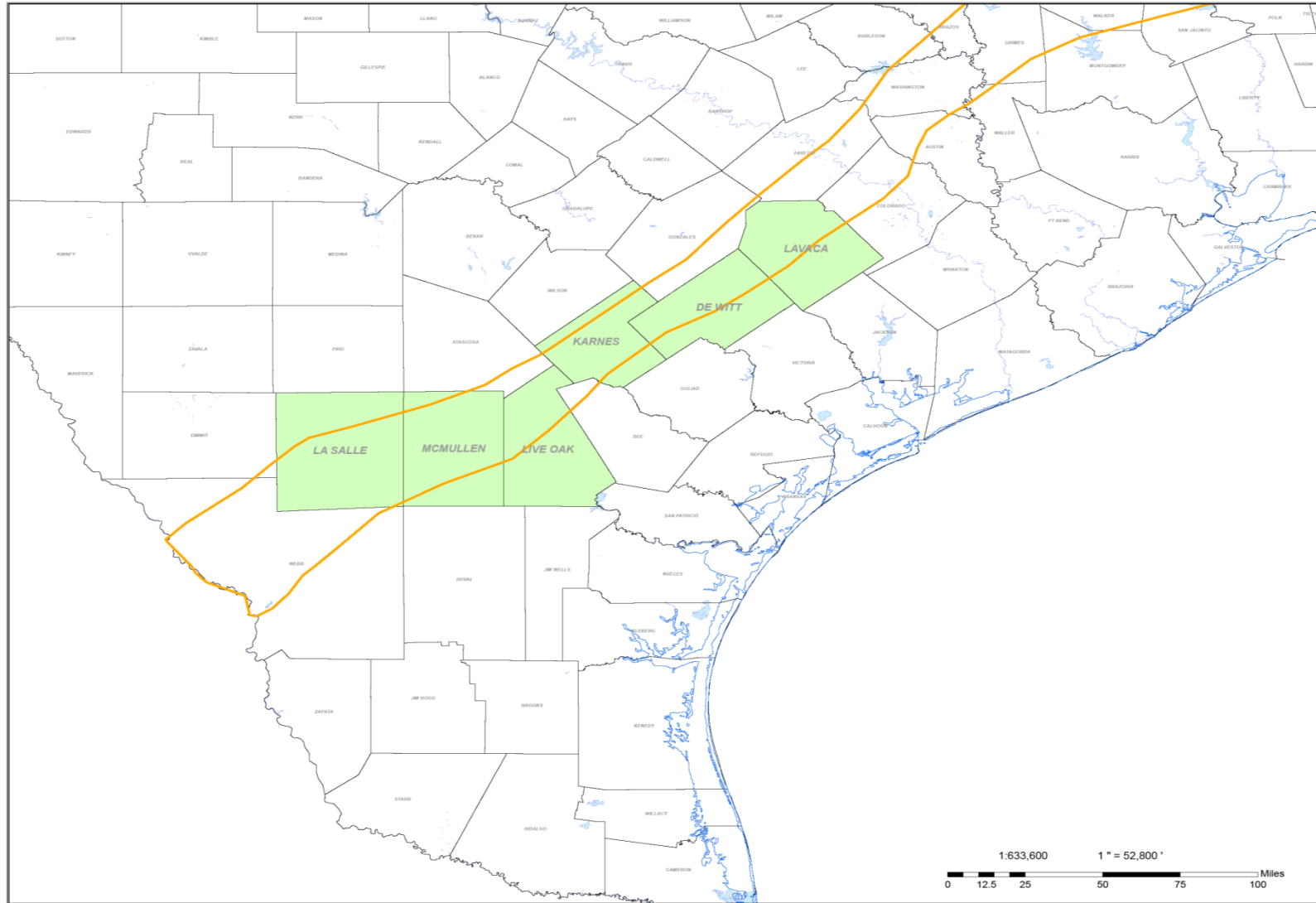


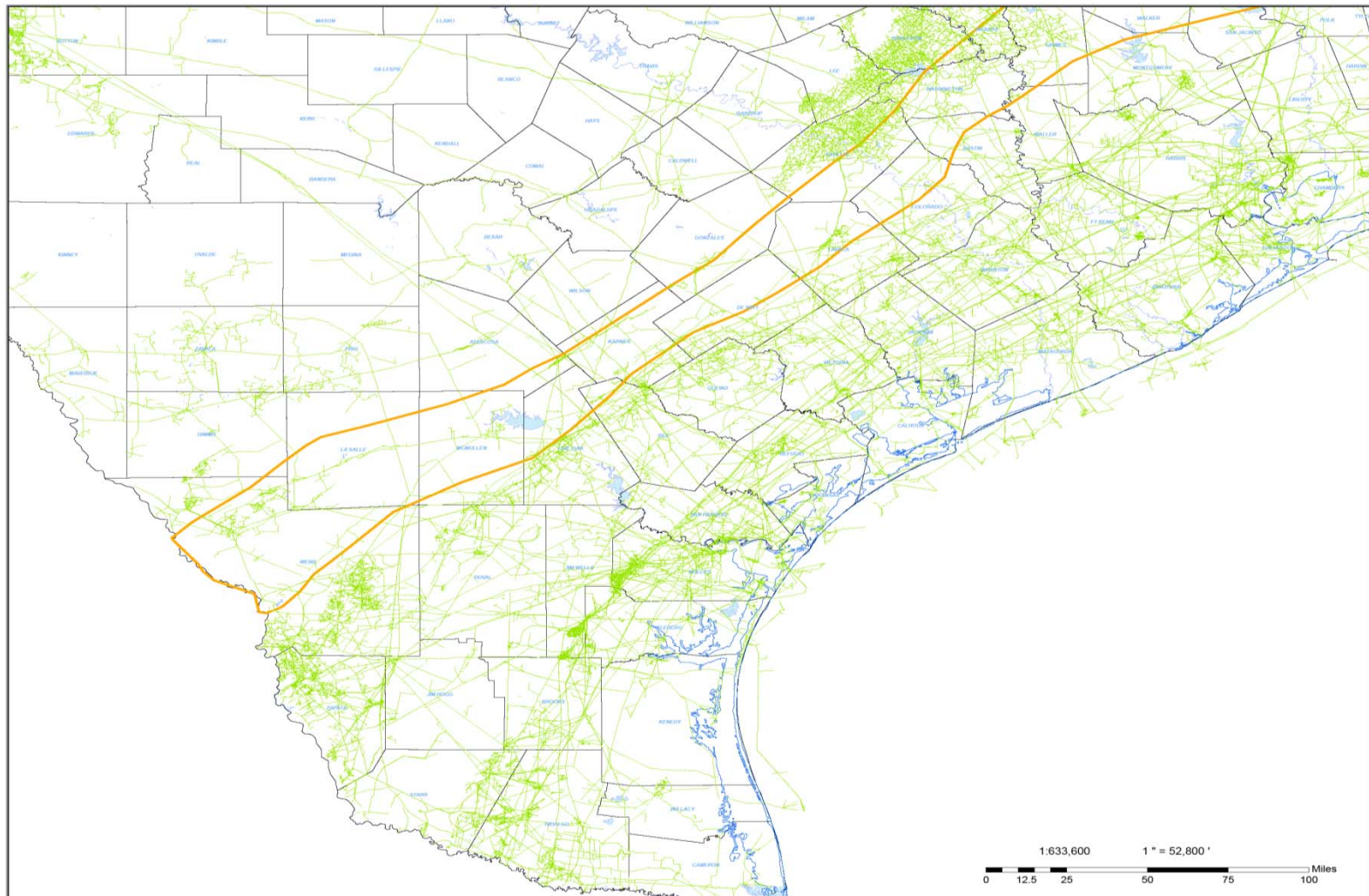
ConocoPhillips Eagle Ford

February 10, 2011

ConocoPhillips Eagle Ford



Eagle Ford Infrastructure



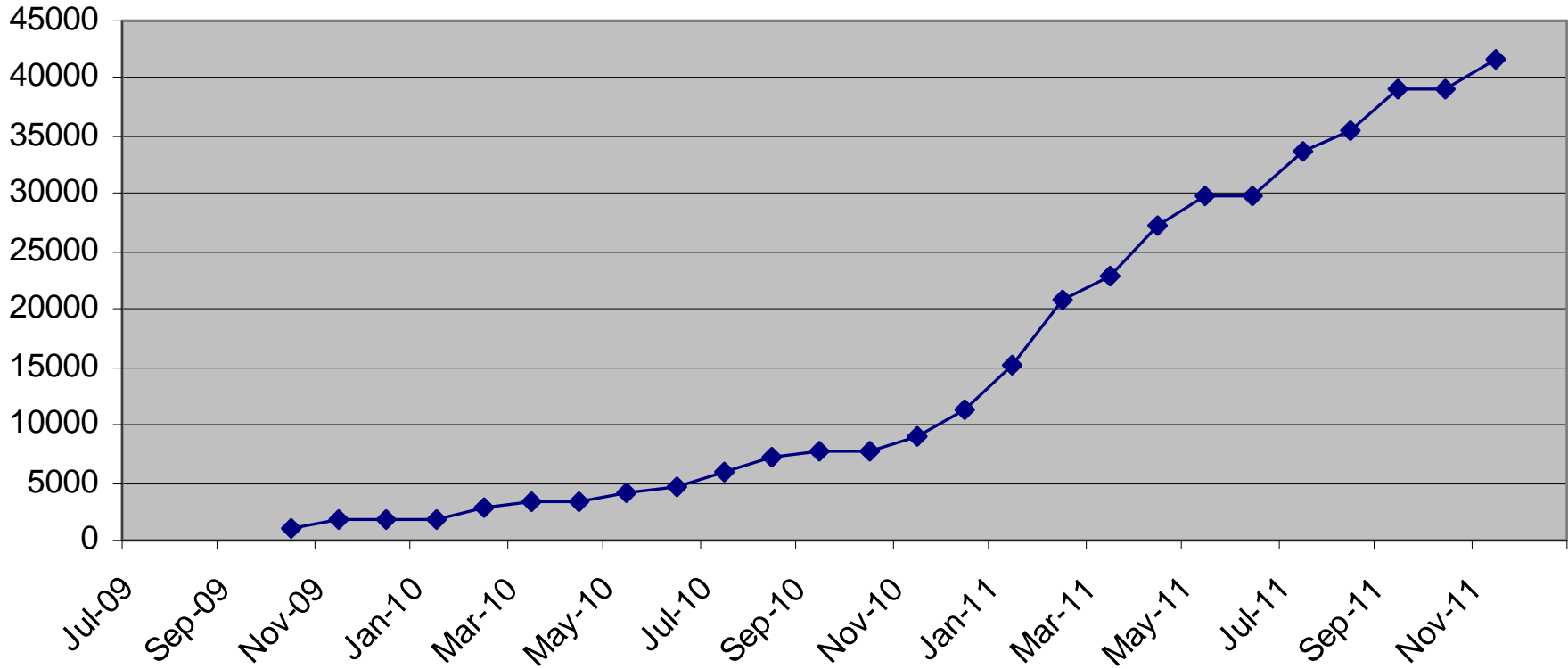
Eagle Ford Issues

- Little infrastructure in area
 - Gas pipelines
 - Liquid pipelines (crude and NGLs)
 - Power
- Condensate Window
- High BTU gas
- New Area, still learning what is there
- Chasing Lease Expirations and Rigs
- Rapid Development
- Liquid hydrocarbons a blessing and a curse

Eagle Ford Issues (con't)

- Compressor Installations:
 - “Cookie Cutter” Design
 - Prefab and modularize as much as possible
 - Lease Compression
 - Weekly coordination meeting
 - Compressor design for flash, low pressure and gas lift
 - Started with Single Well Facilities with small compressor
 - Transitioning to Central Facilities with larger compressors
 - Design changes for H₂S
 - Oversize separation due to liquids needs to be high volume and quick acting systems
 - Fuel and recycle freeze ups due to pressure drops and liquid dropout.
 - Training of company and lease company personnel in new area

Eagle Ford Compression Projected HP through 11-11



In Summary

- Eagle Ford is an exciting new area
- Things are dynamic and facilities need to be able to react to changes as they appear
- Flexibility in the design is critical at this stage because things are going to change